

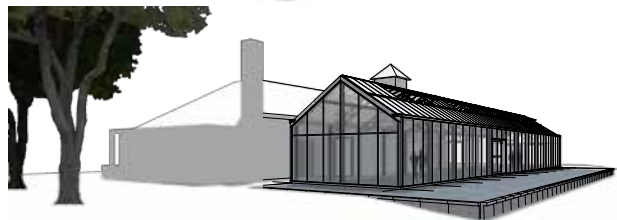


EDENPARKS

THE NEXT GENERATION GLASSHOUSES



Huis Doorn | Kas aan garage



EXHIBITION GLASSHOUSE MUSEUM HUIS DOORN

- ▶ Location Doorn
- ▶ Construction 2014
- ▶ Surface 198 m²
- ▶ Architecture EdenParks, Design and Consultancy
- ▶ Design Widespan
- ▶ Purpose exposition space



Exhibition of the First World War in a stylish and protected *environment*

Museum Huis Doorn is the official location in the Netherlands to remember the First World War. Huis Doorn wanted a pavilion for temporary exhibitions linking the events of 1914-1918 to current world events. EdenParks realized the design and the construction of the pavilion which was built next to the former garage of German Emperor Wilhelm II, who lived in exile in Doorn from 1920 to 1941.

Both buildings have the same roof pitch making it look like it belongs to each other. The roof was made of polycarbonate to protect the museum pieces against fading by UV light. You can still see the beautiful surroundings, because we used insulating glass in the facades. This all results in a nice bright pavilion where memories of that period are properly exhibited.

The Glass Pavilion was officially opened by her Royal Highness Princess Beatrix of the Netherlands.

WWW.EDENPARKS.EU

